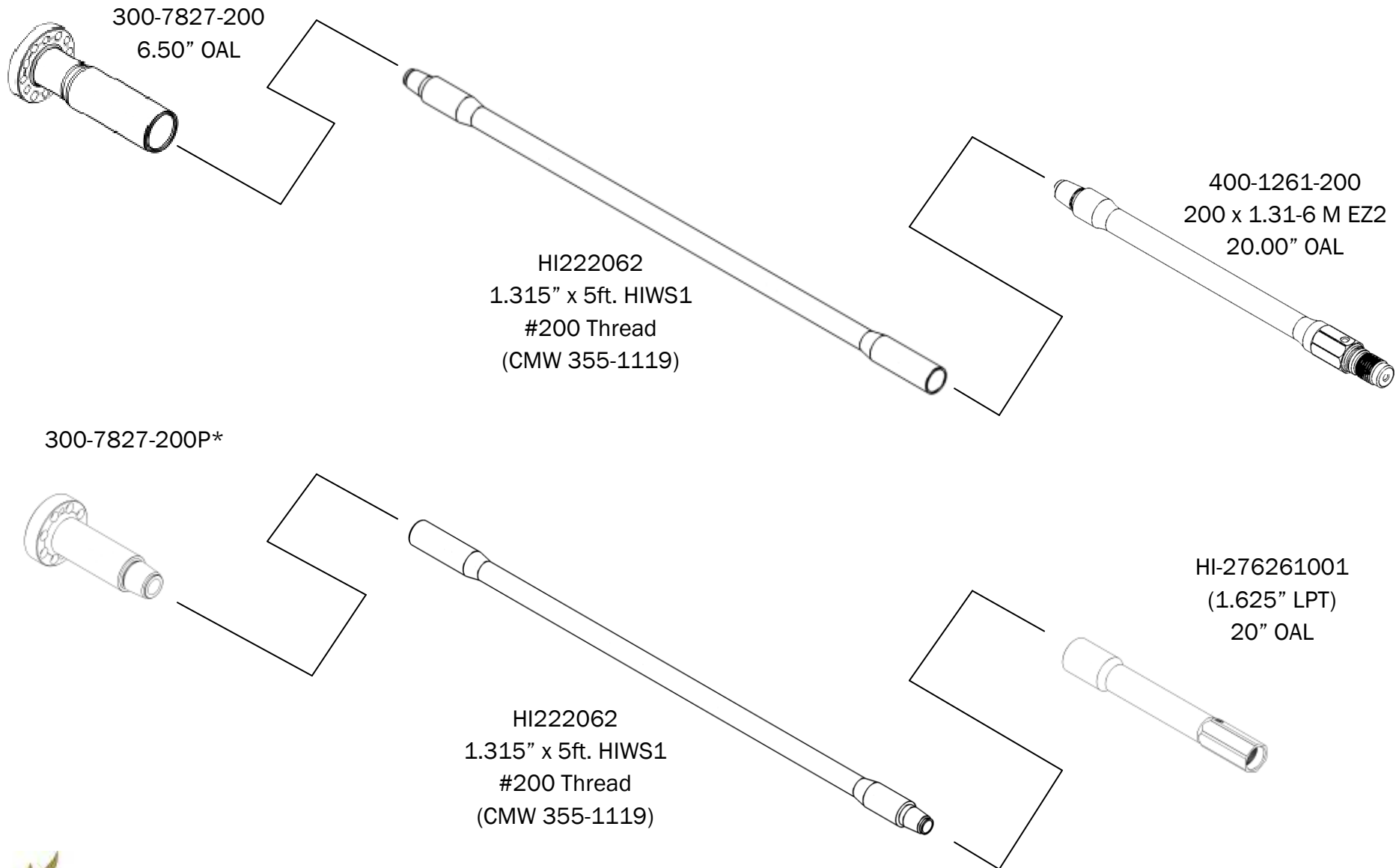


Ditch Witch® JT5 Conversion (HIWS1)

Component Road Map

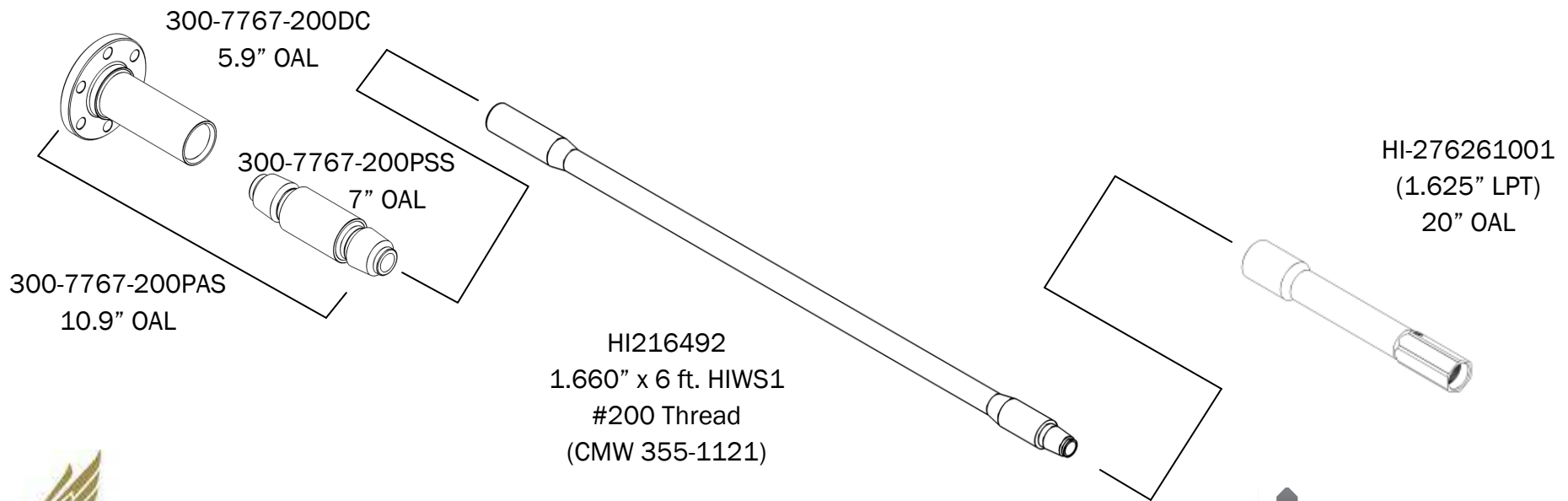
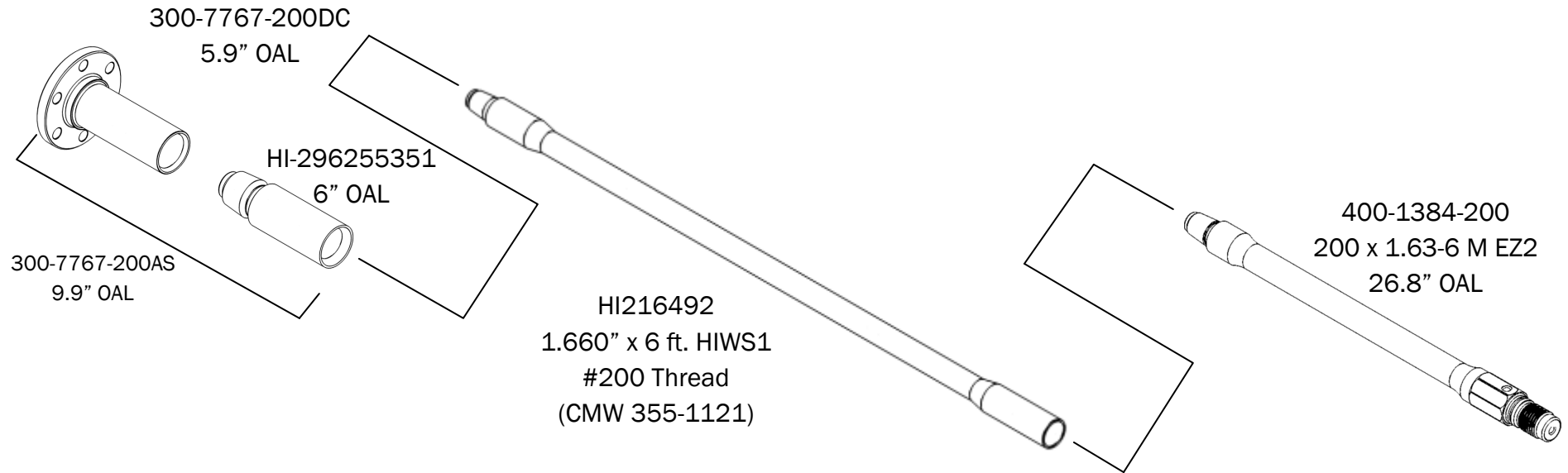


(*) indicates non stocking item



Ditch Witch® JT922 Conversion (HIWS1)

Component Road Map

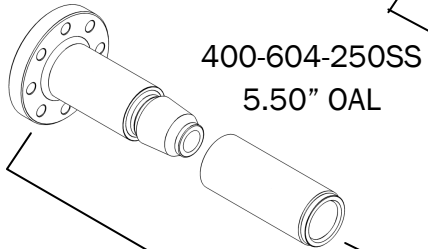


Ditch Witch® JT1220 (HIWS1)

Component Road Map



400-604-400P
7.75" OAL

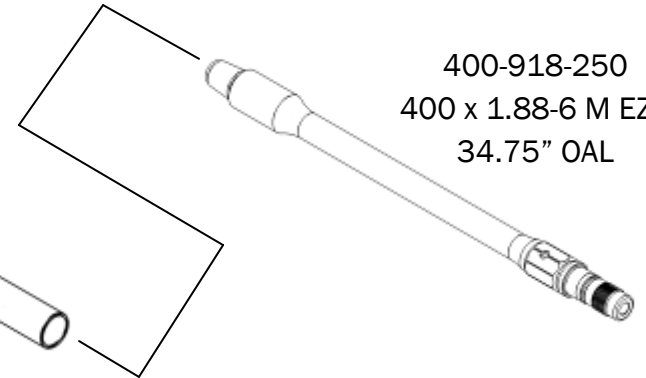


400-604-250SS
5.50" OAL

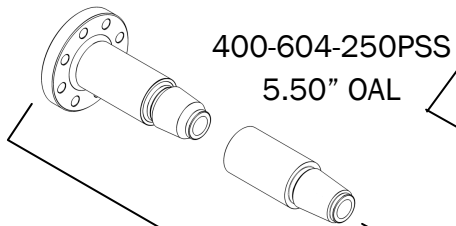
400-604-250AS
10.75" OAL

HI230993
1.900" x 10ft. HIWS1
#250 Thread
(CMW 355-1123)

400-918-250
400 x 1.88-6 M EZ3
34.75" OAL



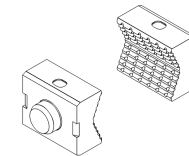
400-604-400P
7.75" OAL



400-604-250PSS
5.50" OAL

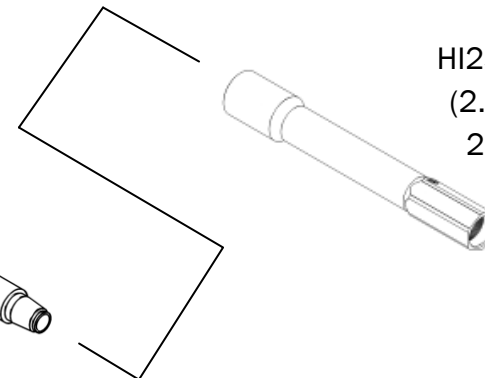
400-604-250PAS
10.75" OAL

HI230993
1.900" x 10ft. HIWS1
#250 Thread
(CMW 355-1123)



H0002
4 Required

HI234840001
(2.125" LPT)
21.2" OAL

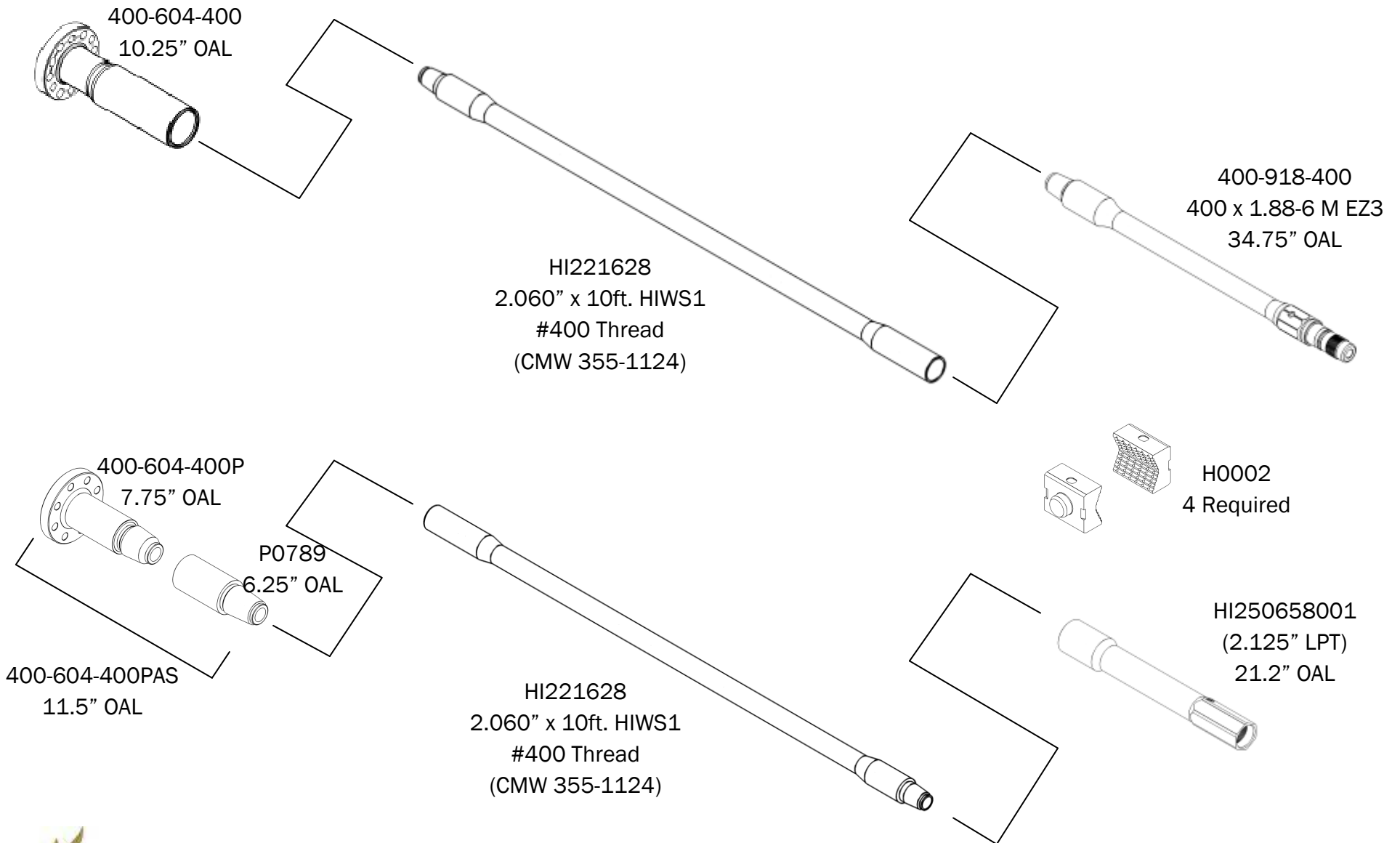


Contact your Hunting representative for information regarding modifications to drill rig for conversion.

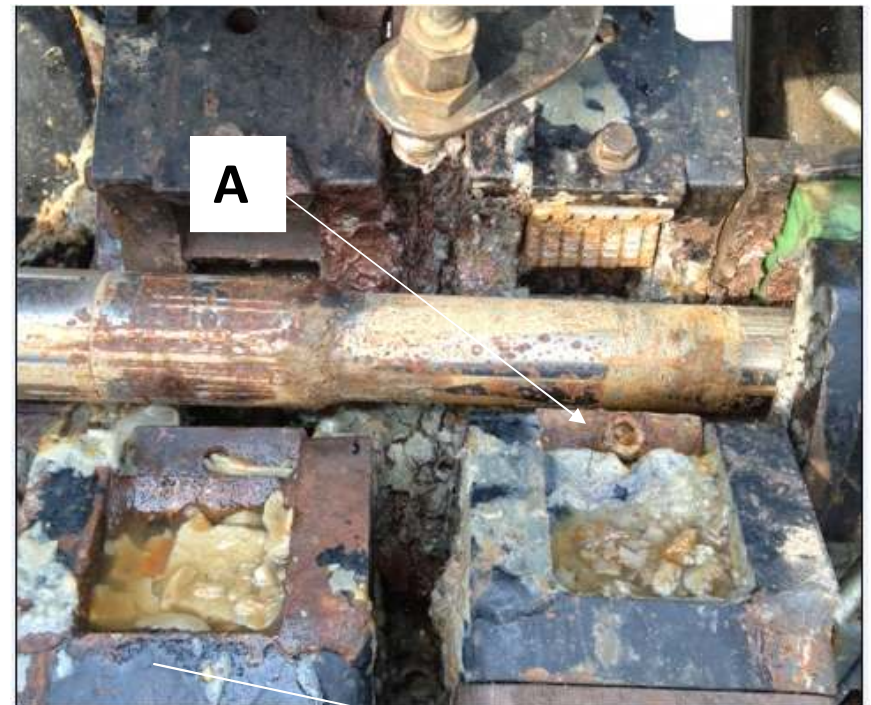
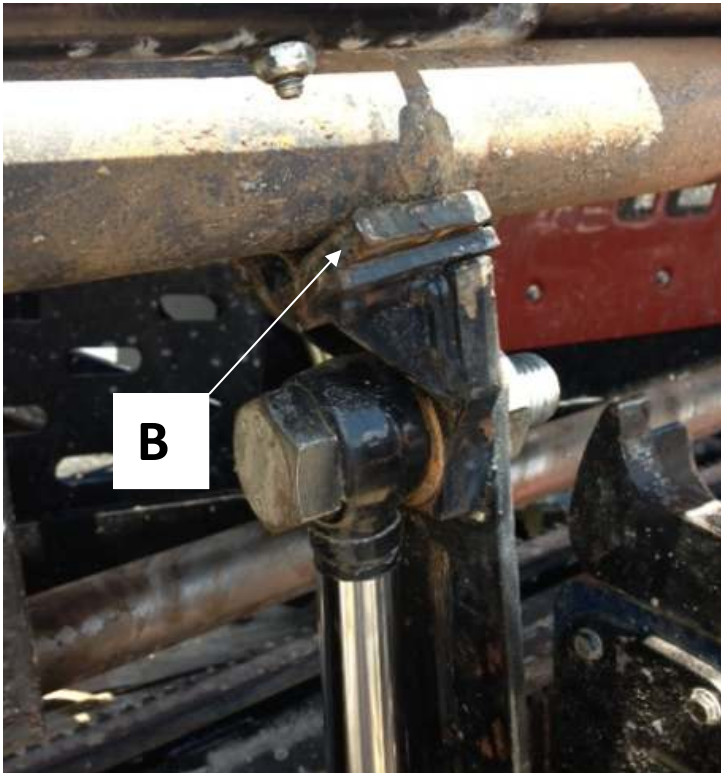


Ditch Witch® JT1220 / JT2020 Conversion (HIWS1)

Component Road Map



Ditch Witch® JT1220/JT2020 Conversion



Additional items needed to complete conversion using HI221628 or HI230993 pipe.

-[A] A set of four jaw blocks for use with 2.25" or 2.125" tool joints (2.060" and 1.900" pipe). Jaw block can be purchased from Hunting part number H0002.

-[B] To account for the smaller diameter tool joint and lifting pipe into the rod-box, Hunting recommends welding 1/4" spacer plates on the two lift arms. (Required for JT2020 only)

-Note: Proximity sensors used in detection of pipe location for the rod loader functions may have to be repositioned slightly to account for the different diameter pipe.



Ditch Witch® JT2020 Conversion (2.060 pipe)



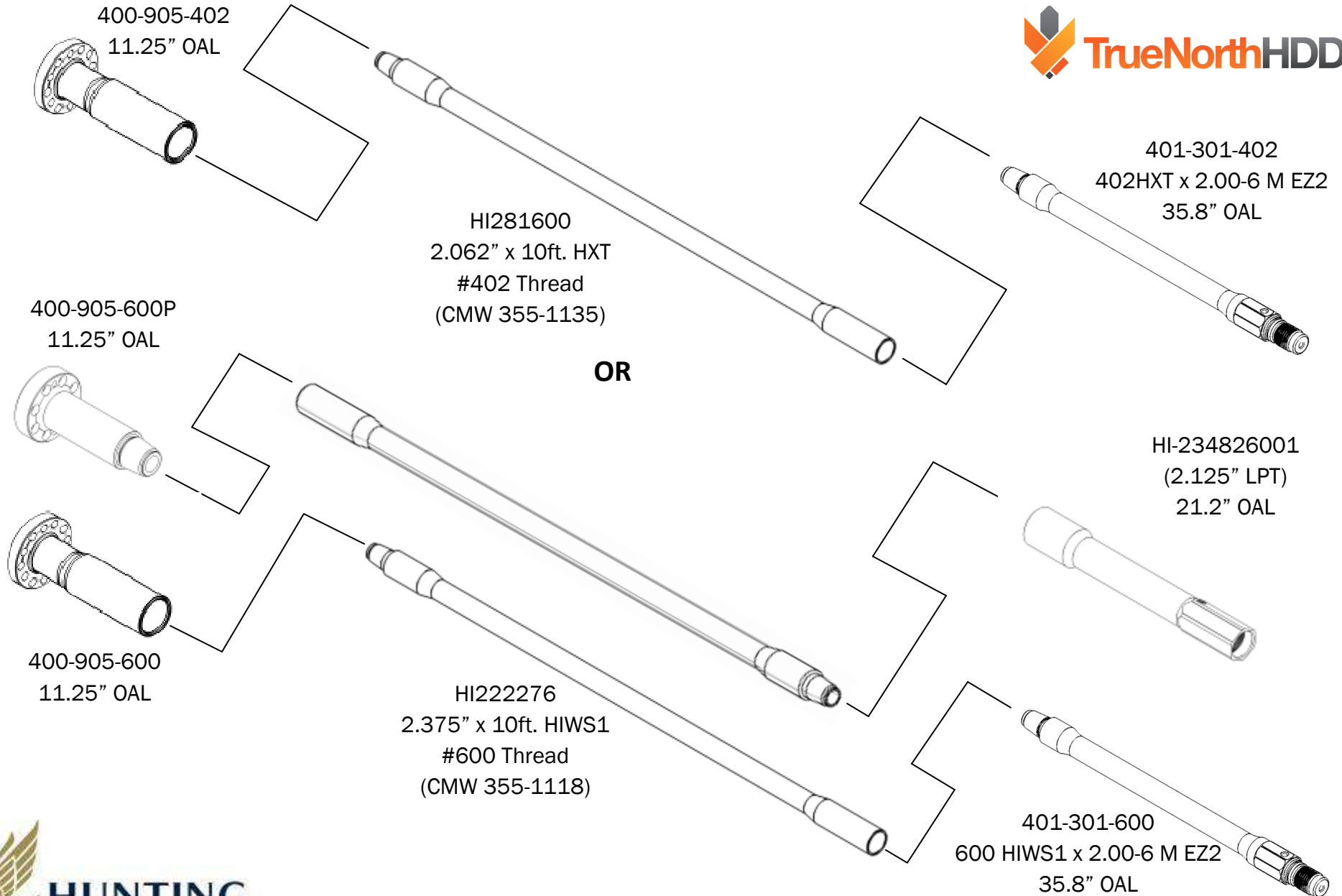
Additional items needed to complete conversion using HI221628 pipe.

-[C] The smaller OD tool joints stagger in the pipe loader guide area and will not allow a smooth transition into the rod box. Use 1/4" plate x 3" wide x 6-3/4" in length, bevel at both ends then stitch weld to inside of box dividers to create a smooth transition for the pipe. Material should be attached to the flat side (opposite operator side) of the guide area. (Required for JT2020 only)

-[D] Weld 3/8" spacer to catch arm to account for the smaller diameter pipe. (Required for JT2020 only)

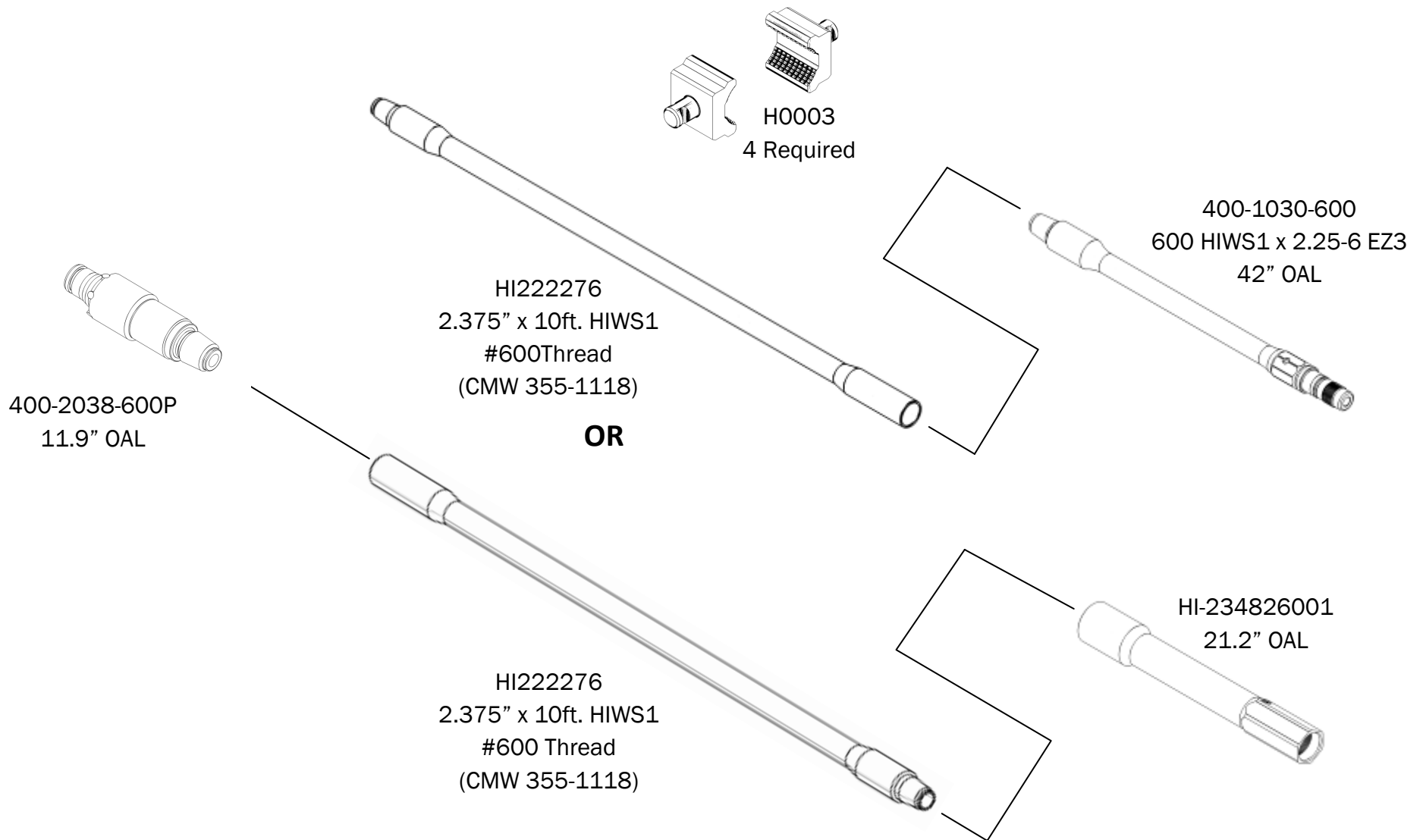
Ditch Witch® JT2020 Conversion (HXT / HIWS1)

Component Road Map



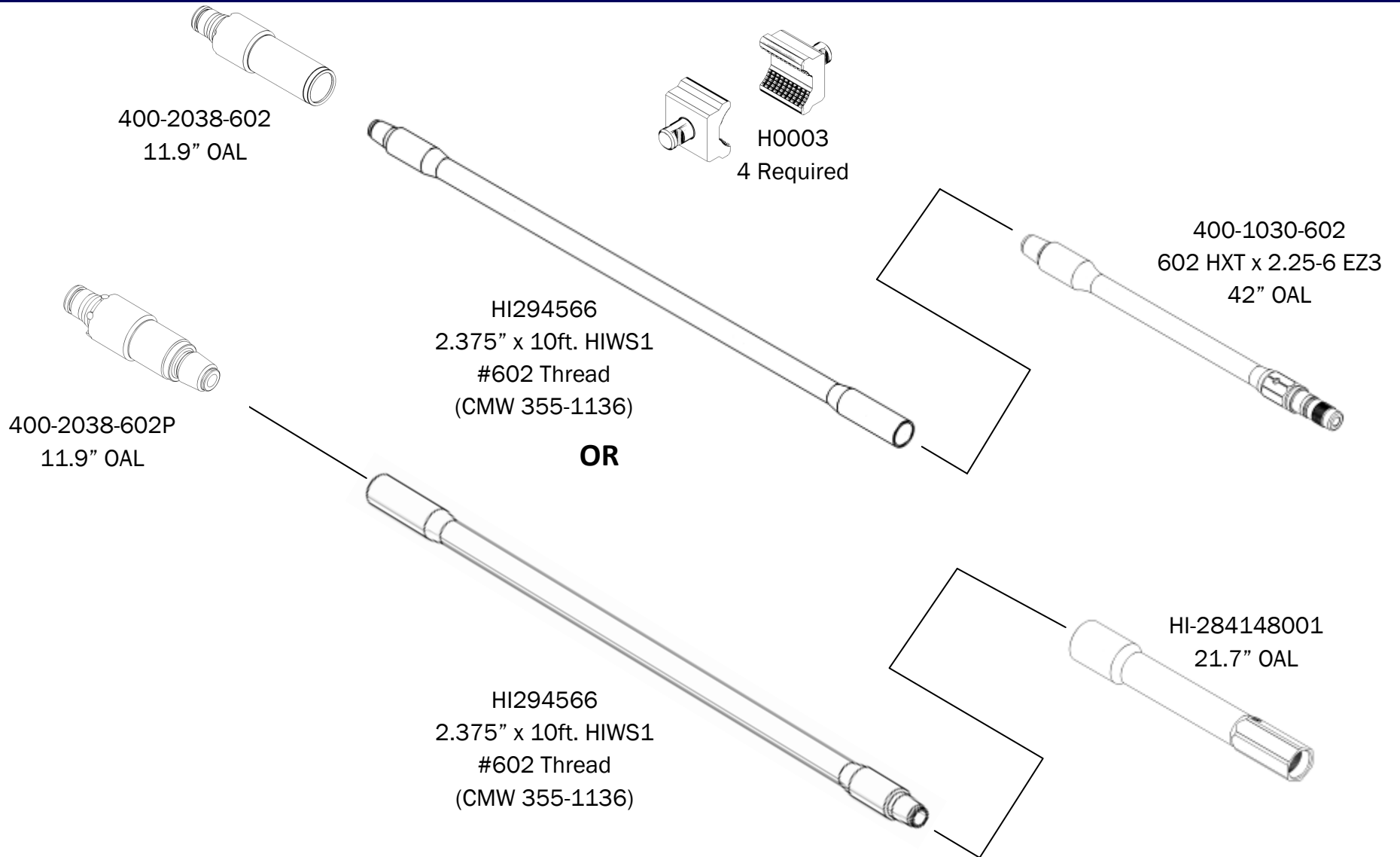
Ditch Witch® JT25 Conversion (HIWS1)

Component Road Map



Ditch Witch® JT25 Conversion (HXT)

Component Road Map



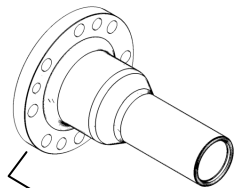
Ditch Witch® JT2720M1 Conversion (HXT)

Component Road Map

400-1224-602DC (5.75" Dia. Flange)

400-1229-602DC (7.50" Dia. Flange)

10.9" OAL



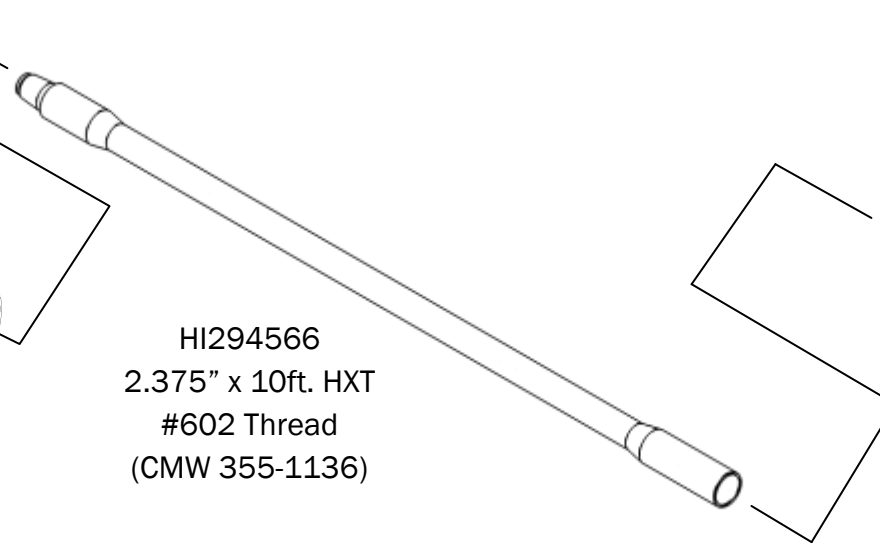
HI284144001
11.25" OAL



400-1224-602AS (S/N 2W0001-2W9999)

400-1229-602AS (S/N 2X0001-2X9999)

HI294566
2.375" x 10ft. HXT
#602 Thread
(CMW 355-1136)



400-1030-602
602 HXT x 2.25-6 EZ3
42" OAL



Contact your Hunting representative for information regarding modifications to drill rig for conversion.



Ditch Witch® JT2720M1 Conversion (HIWS1)

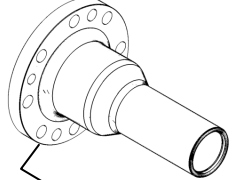
Component Road Map



400-1224-602DC (5.75" Dia. Flange)

400-1229-602DC (7.50" Dia. Flange)

10.9" OAL



400-1223-600
11.25" OAL



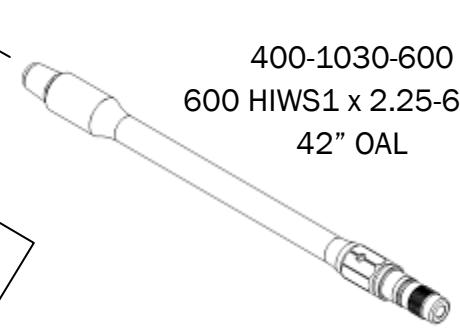
19.3" OAL

400-1224-600AS (S/N 2W0001-2W9999)

400-1229-600AS (S/N 2X0001-2X9999)

HI222276
2.375" x 10ft. HIWS1
#600 Thread
(CMW 355-1118)

400-1030-600
600 HIWS1 x 2.25-6 EZ3
42" OAL

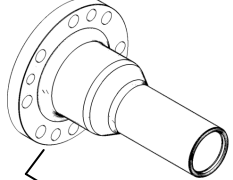


OR

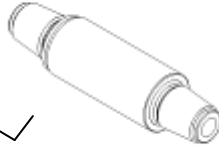
400-1224-602DC (5.75" Dia. Flange)

400-1229-602DC (7.50" Dia. Flange)

10.9" OAL



400-1223-600PSS
11.25" OAL



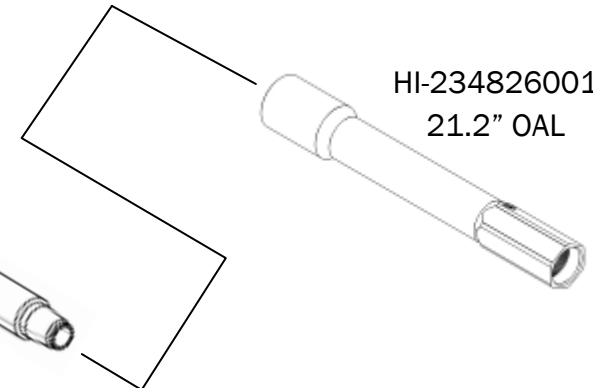
19.3" OAL

400-1224-600PAS (S/N 2W0001-2W9999)

400-1229-600PAS (S/N 2X0001-2X9999)

HI222276
2.375" x 10ft. HIWS1
#600 Thread
(CMW 355-1118)

HI-234826001
21.2" OAL

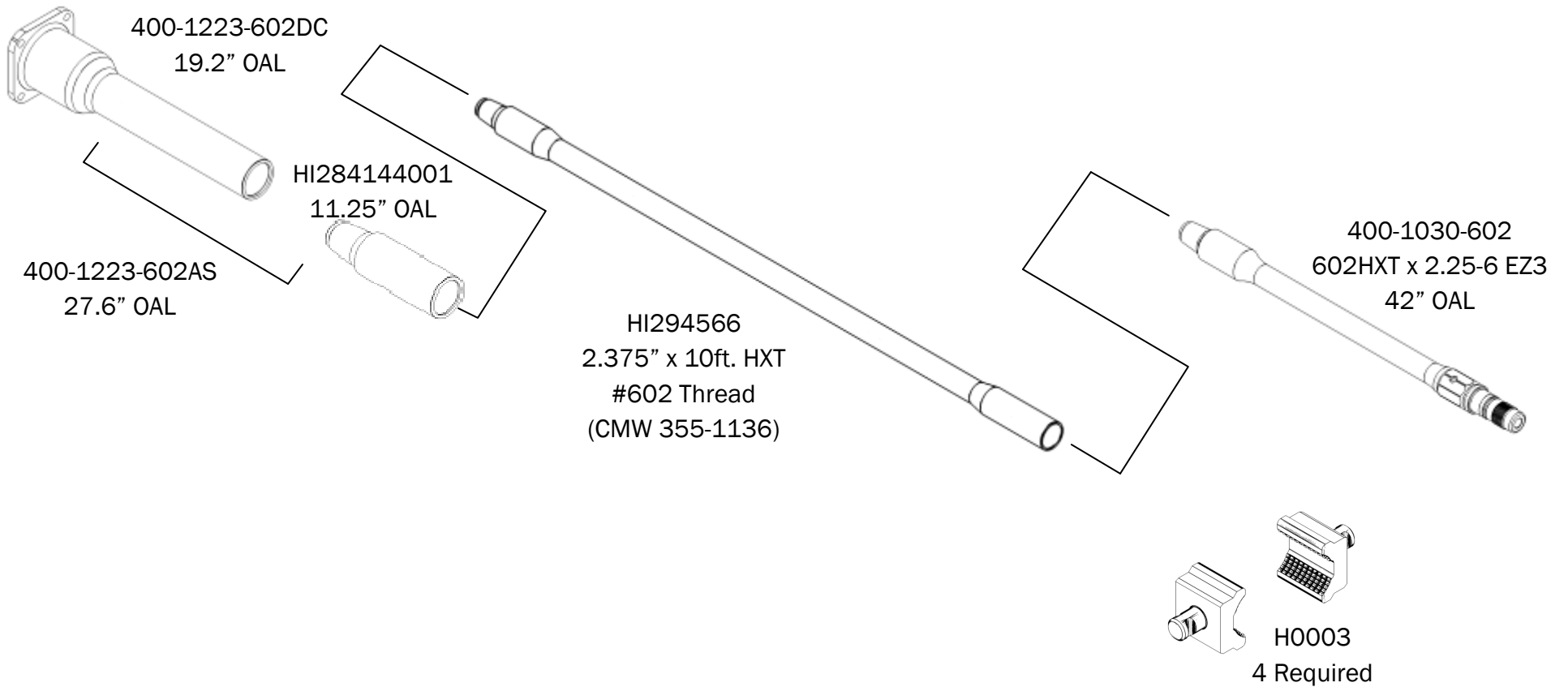


Contact your Hunting representative for information regarding modifications to drill rig for conversion.

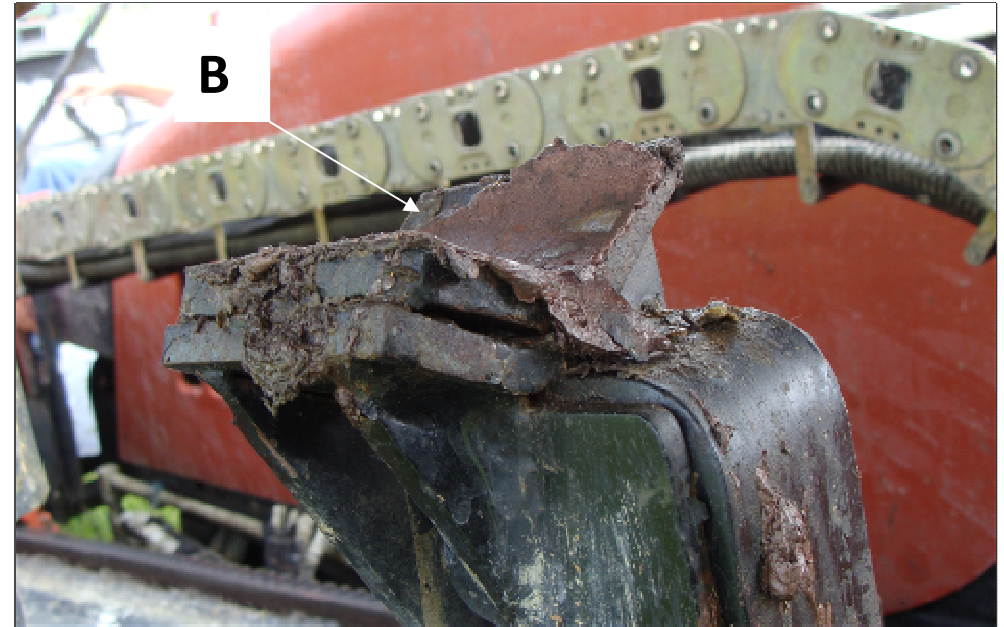
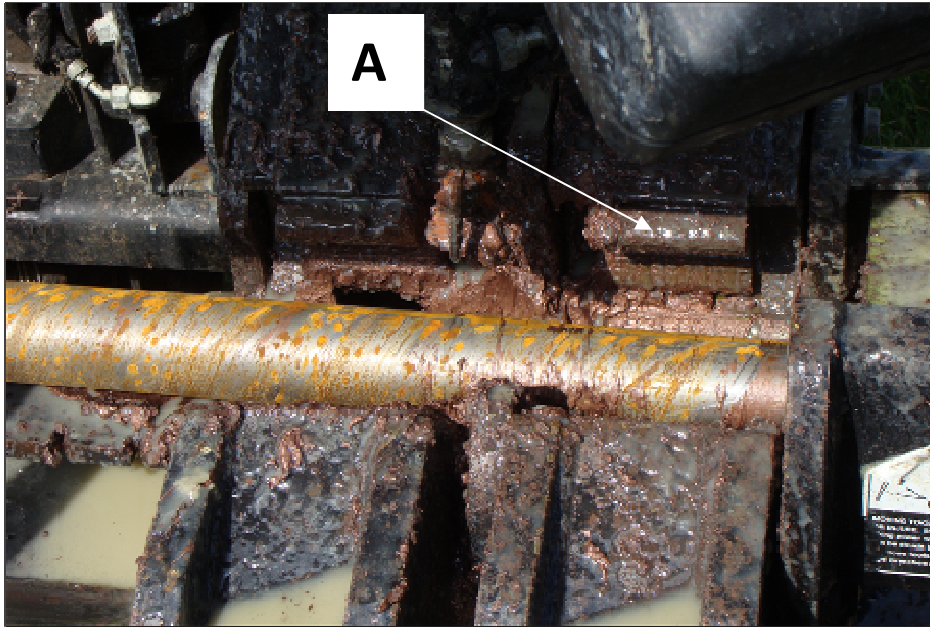


Ditch Witch® JT3020 Conversion (HXT)

Component Road Map



Ditch Witch® JT3020 Conversion (HXT)



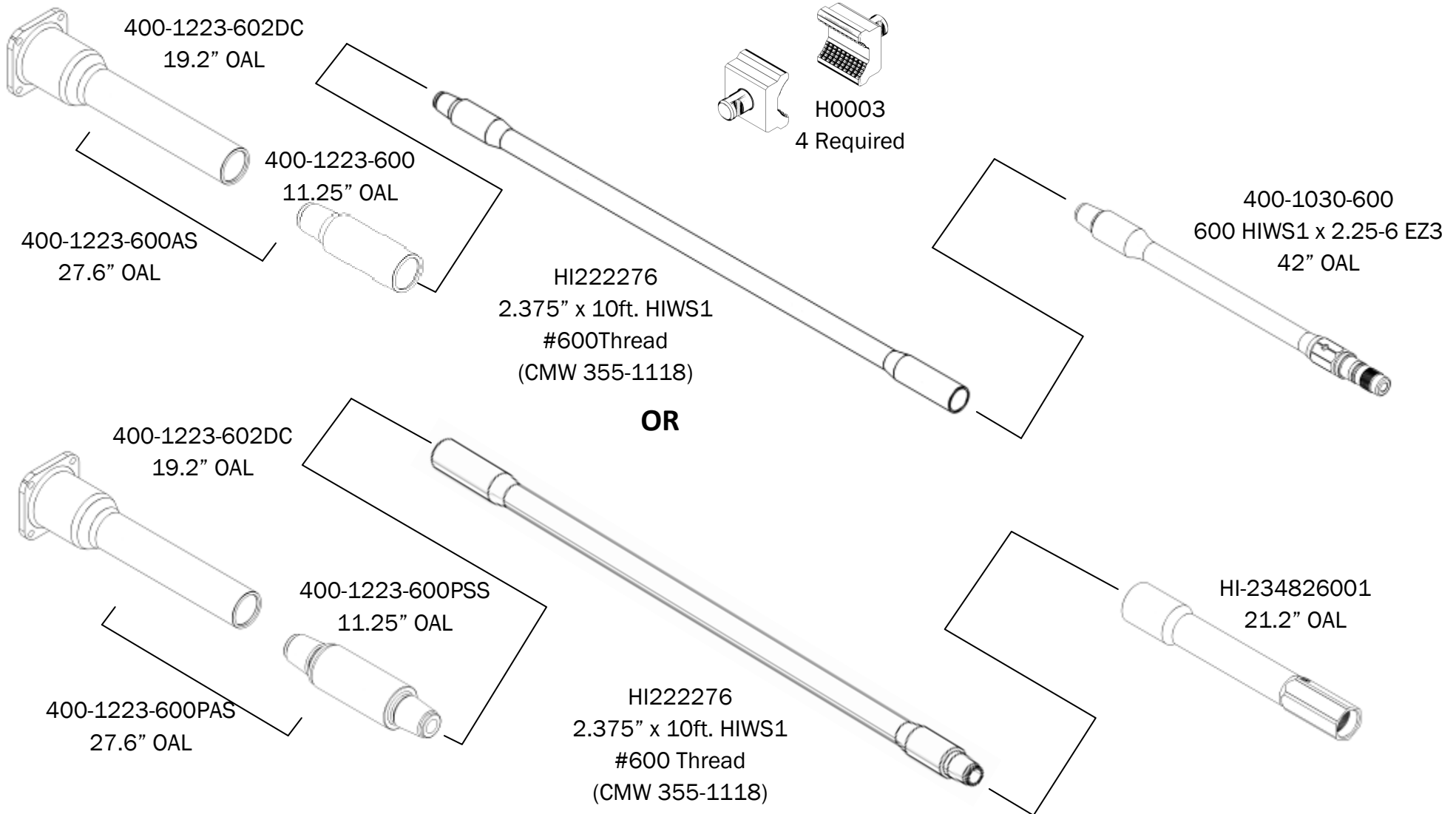
Additional items needed to complete HXT conversion.

-[A] Set of 4 jaw blocks for use with 2.625" or 2.750" tool joints. Jaw block can be purchased from Hunting part number H0003.

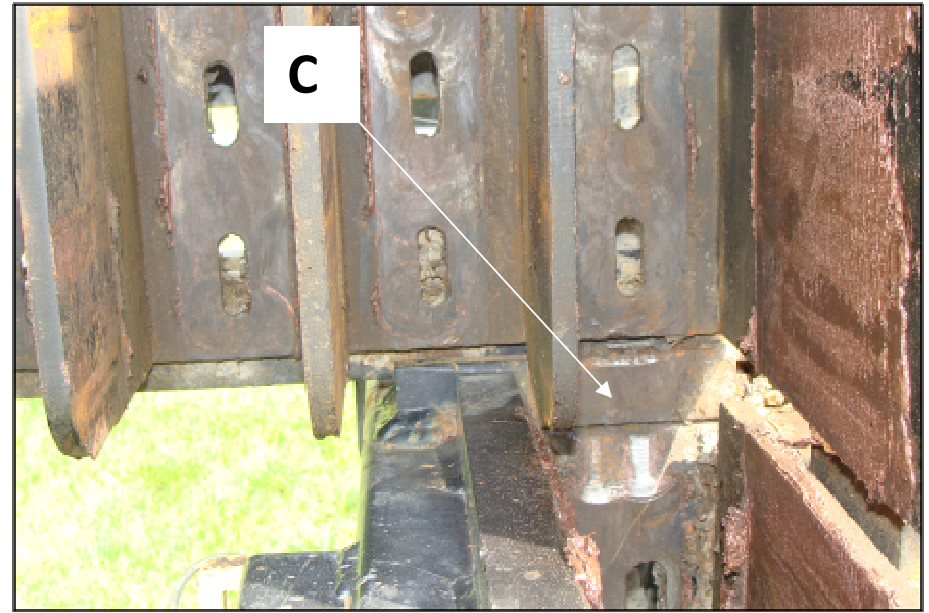
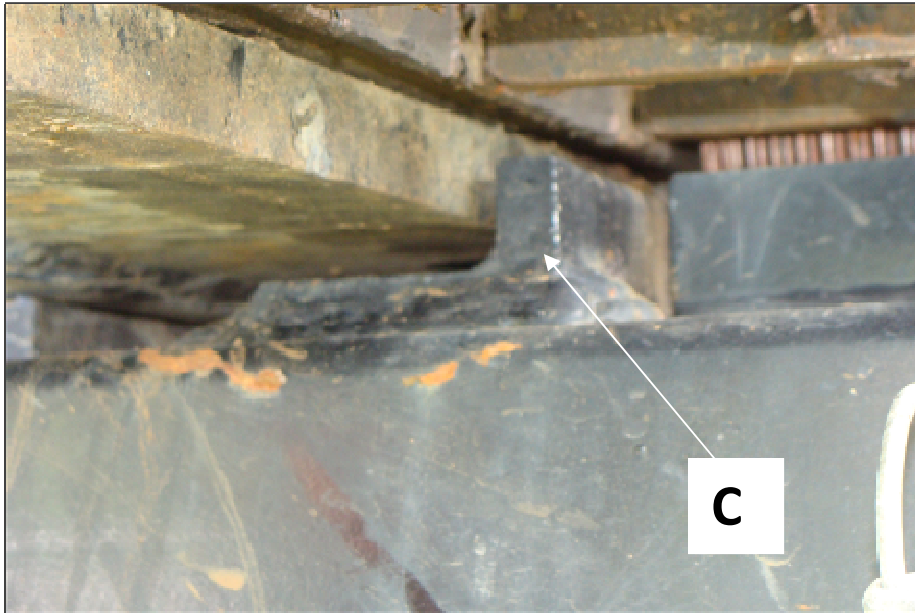
-[B] To account for a smaller diameter tool joint and lifting pipe into rod-box, Hunting recommends welding 1/4" spacer plates on the two lift arms.

Ditch Witch® JT3020 Conversion (HIWS1)

Component Road Map



Ditch Witch® JT3020 Conversion (HIWS1)



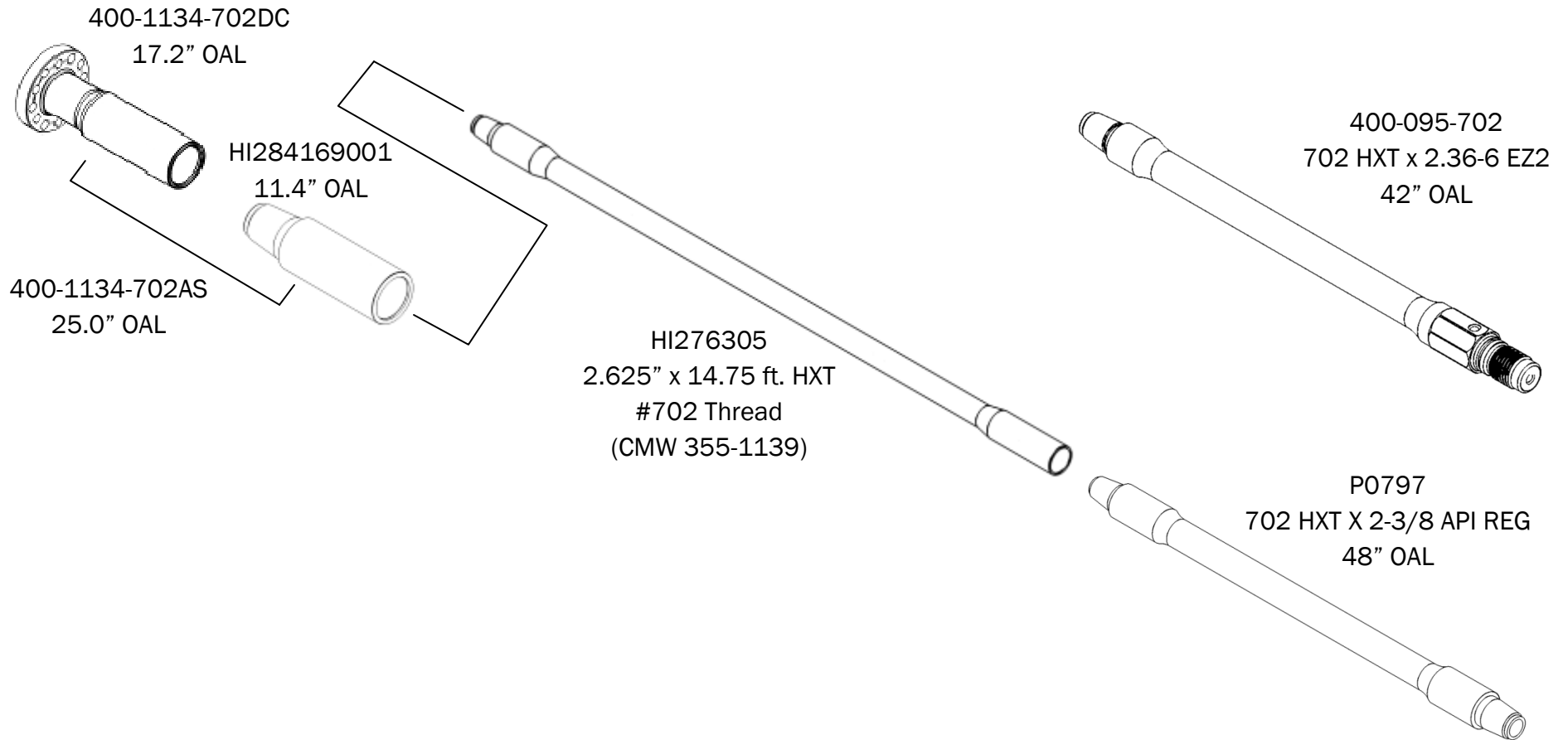
Additional items needed to complete HIWS1 “pin-down” conversion.

- Complete steps “A” and “B” from JT3020 HXT conversion. Replace jaw blocks and add spacer plates to lifter arms.

-[C] Weld a vertical guide plate, extending the pipe guide into the pipe box. (A small piece of angle iron works best. With a pin-down configuration the nose of the pin can “catch” on the bottom of the rod box, when the pipe is lifted back into the rod box, therefore it is necessary to add a vertical guide plate.)

Ditch Witch® JT4020 Conversion (HXT)

Component Road Map



Ditch Witch® JT60 Conversion (HIWS1)

Component Road Map



HI222452
2.875" x 15 ft. HIWS1
#900Thread
(CMW 355-1132)

Ditch Witch® JT7020/JT8020/JT100 Conversion (HXT)

Component Road Map

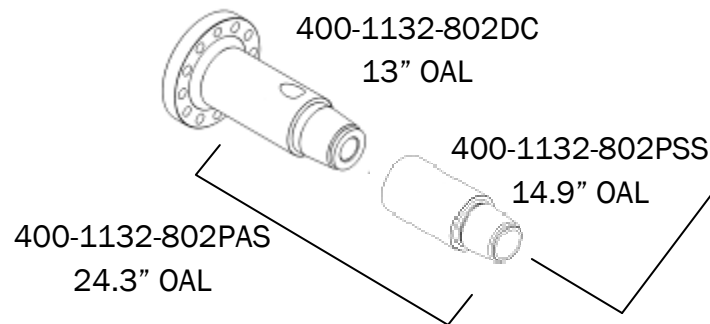
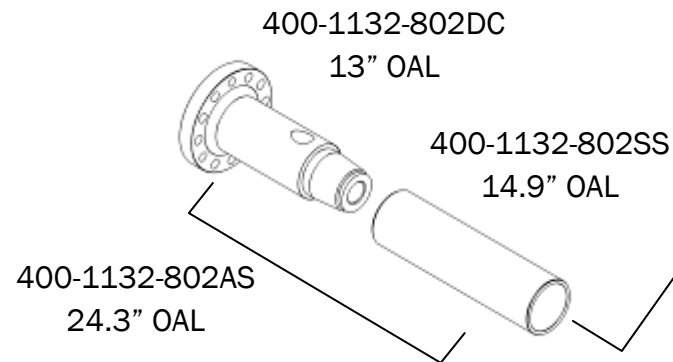
Optional parts for BOX down conversion. The following parts will allow you to add your existing Ditch Witch pipe to the string when your bore distance exceeds the number of HXT rods you have.

P0848* 14.9" OAL ADAPTER (JT100 BOX X 802 BOX)

P0849* 13.0" OAL SAVER SUB (802 BOX X JT100 PIN)
(CALL FOR PRICING)

P0847* 57" OAL TRANSITION ROD
802 PIN X JT100 PIN
(CALL FOR PRICING)

HI350802015
3.500" x 15ft. HXT
#802 Thread
(CMW 355-1142)



H0012, 3/8" NPT Plug
Wireline Plug

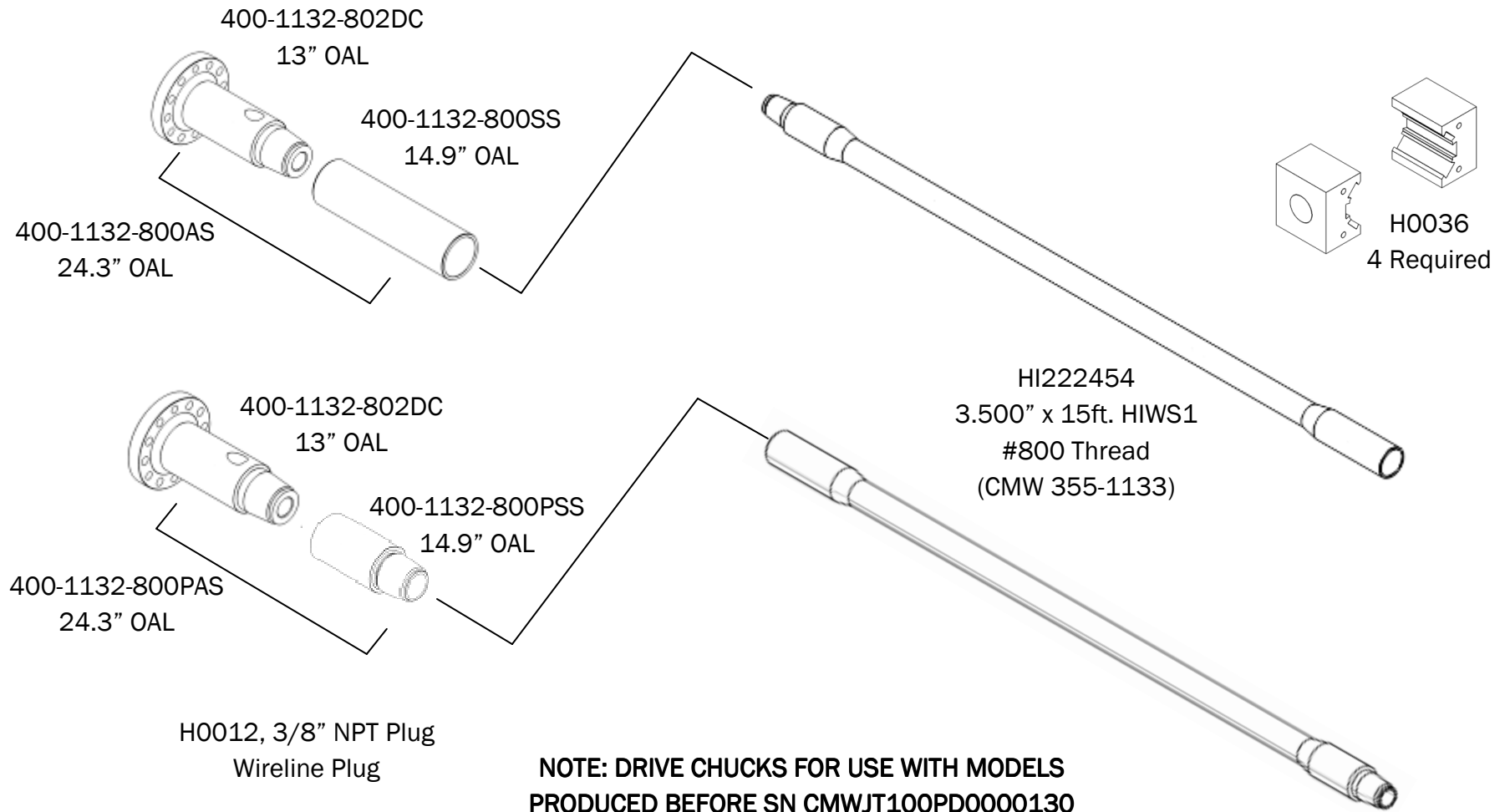
**NOTE: DRIVE CHUCKS FOR USE WITH MODELS
PRODUCED BEFORE SN CMWJT100PD0000130**

(*) indicates non stocking item



Ditch Witch® JT7020/JT8020/JT100 Conversion (HIWS1)

Component Road Map



Ditch Witch® JT100 Conversion (HXT)

Component Road Map

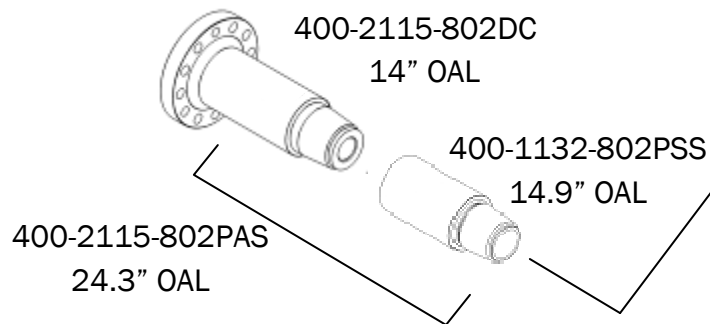
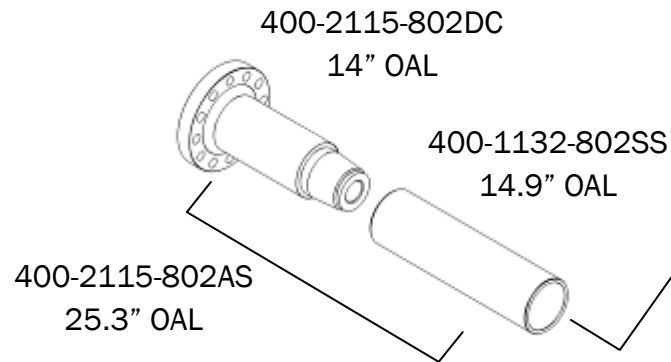
Optional parts for BOX down conversion. The following parts will allow you to add your existing Ditch Witch pipe to the string when your bore distance exceeds the number of HXT rods you have.

P0848* 13" OAL ADAPTER (JT100 PIN X 802 BOX)

P0849* 14.9" OAL SAVER SUB (802 BOX X JT100 BOX)
(CALL FOR PRICING)

P0847* 57" OAL TRANSITION ROD
802 PIN X JT100 PIN
(CALL FOR PRICING)

HI350802015
3.500" x 15ft. HXT
#802 Thread
(CMW 355-1142)



H0012, 3/8" NPT Plug
Wireline Plug

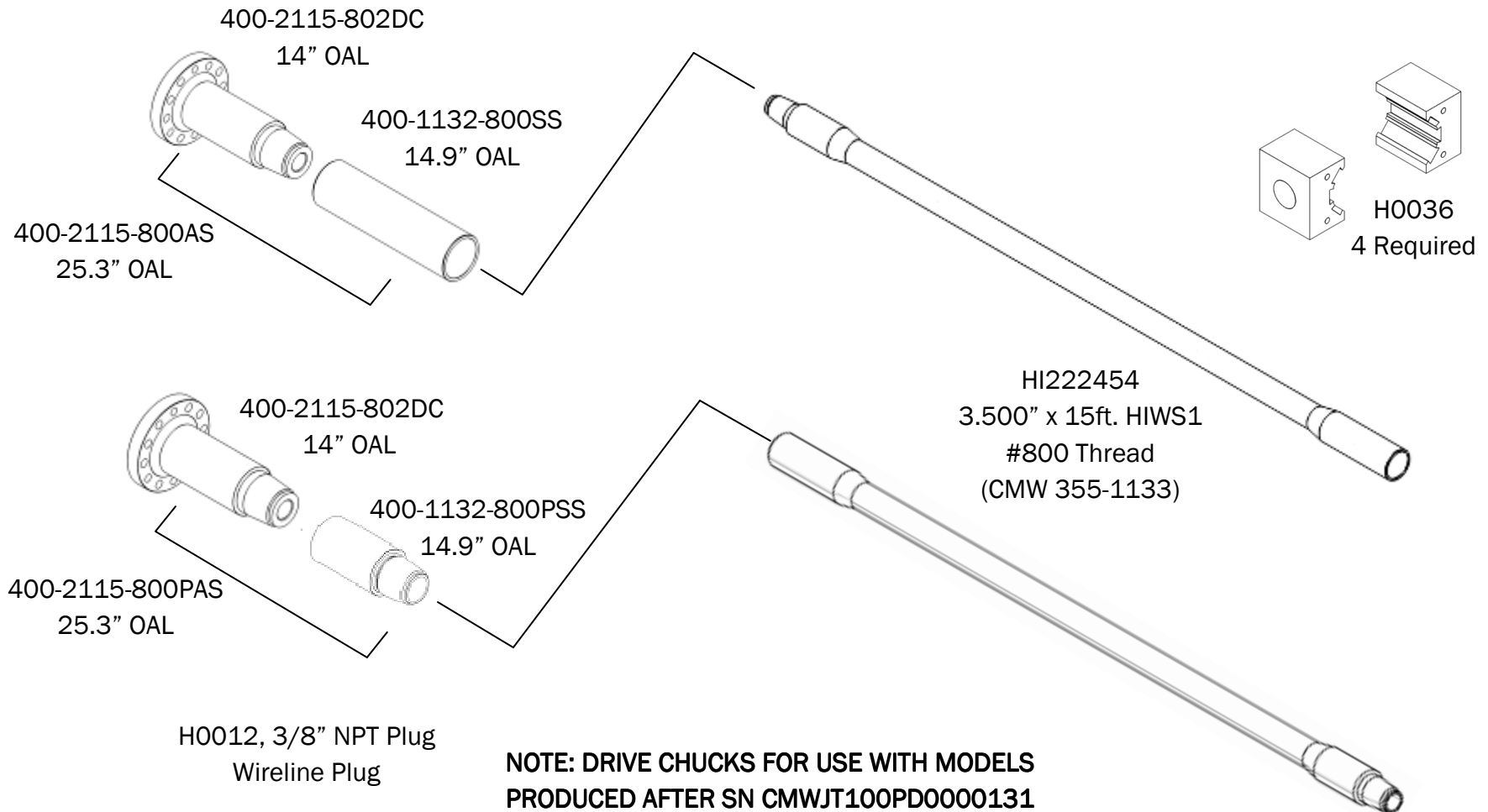
**NOTE: DRIVE CHUCKS FOR USE WITH MODELS
PRODUCED AFTER SN CMWJT100PD0000131**

(*) indicates non stocking item



Ditch Witch® JT100 Conversion (HIWS1)

Component Road Map



Ditch Witch® Conversions



General note about Ditch Witch conversions

- Drill rigs with pipe locator switches (prox switch) may need to be adjusted due to Hunting drill rod diameters being different than standard Ditch Witch rod. Adjustment screws are located on switch mounting bracket. Picture on the left are shown as an example and may not represent your exact rig.
- When converting a drill rig to run the pipe “PIN down” the automated greasers will need to be adjusted. If the machine has both upper and lower greaser, the upper greaser will need to be disconnected (reference photo above).
- Any drill rig that has “auto-makeup”, you may need to reset the parameters to compensate for the difference between the pitch of the Hunting thread vs. the pitch of the Ditch Witch thread. These parameters can only be reset by the Ditch Witch service mechanic at your local dealership.



Starter Rod /Transition Rod Accessories

Starter Rod/Transition Rod Components	Transition Rod Part Number
JT5 1.31-6 M EZ2 369-319, EZ Protector Cap H0032, M8-1.25 X 12mm Cap Screw H0018, O-Ring (025 D90 Poly)	400-1261-200
JT922 1.63-6MEZ2 111-092, EZ Protector Cap H0005, M10-1.50 X 12mm Cap Screw H0008, O-Ring (029 D90 Poly)	400-1384-200
JT1220 1.88-6MEZ3 159-574, EZ Protector Cap H0006, M10-1.50 X 16mm Cap Screw H0009, O-Ring (223 D90 Buna)	400-918-250
JT2020 2.00-6MEZ2 369-271, EZ Protector Cap H0007, M12-1.75 X 20mm Cap Screw H0010, O-Ring (032 D90 Poly)	400-918-400 401-301-402 401-301-600
JT3020 2.25-6MEZ3 111-094, EZ Protector Cap H0006, M10-1.50 X 16mm Cap Screw H0011, O-Ring (137 D90 Poly)	400-1030-602 400-1030-600

H0004, 1/2"-13 X 3/8" SHCS
 Vermeer Starter Rod Cap Screw
 Use with 2.125" LPT

H0014, 3/8"-16 X 1.2" SHCS
 Vermeer Starter Rod Cap Screw
 Use with 1.625" LPT

H0013, Saver Sub Locking Compound
 Single use container. Note, product is date sensitive, only order as needed. Shelf life of product is 6 months.

